



Reserved document

Titanmed s.r.l. unipersonale
Via E. Monti 23, Fraz. Visconti
I – 23851 – Galbiate LC

April 8, 2015

Messrs. Titanmed s.r.l. unipersonale,
in the framework of the existing collaboration between your company and our research group, we are sending you this report regarding the results obtained by the XPS analysis of a sample that you sent to us. This report was written only for the aim of scientific research and is not a certification. Its use is authorized only in the framework of the research collaboration between Titanmed s.r.l. and Politecnico di Torino. We decline any responsibility for any use different from the authorized one.

XPS analysis of the sample: SCREW IMPIANTO 4.7 H8 STRAIGHT COD. SCRIMP009 LOT. 002999 WITH DM TECOM IMPLANTOLOGY

XPS (X-ray Photoelectron Spectroscopy) analysis was carried out at the Department of Applied Science and Technology (DISAT) of Politecnico di Torino. Three different sites were analyzed (neck, central region and tip). For each site, the analyzed area was (400 x 400) μm . Survey spectra were acquired (1200 - 0 eV) in order to identify the chemical species on the surface.

Results: chemical composition of the surface

<i>SAMPLE: SCREW IMPIANTO 4.7 H8 STRAIGHT COD. SCRIMP009 LOT. 002999 WITH DM TECOM IMPLANTOLOGY</i>			
REGION	NECK (at.%)	CENTRAL REGION (at.%)	TIP (at.%)
C	29.8	23.4	27.3
O	51.3	55.3	53.1
Ti	17.6	20.2	19.6
Si	0.9	/	/
Ca	0.4	/	/
N	/	0.1	0.6

Reserved document

From the data reported in table above, it is possible to state that the following elements are adsorbed on the sample surface:

- Carbon, lower in the central region;
- Silicon only on the neck;
- Calcium only on the neck;
- Nitrogen, only in the central region

Scientific literature reports the following typical conditions for XPS analysis of dental implants.

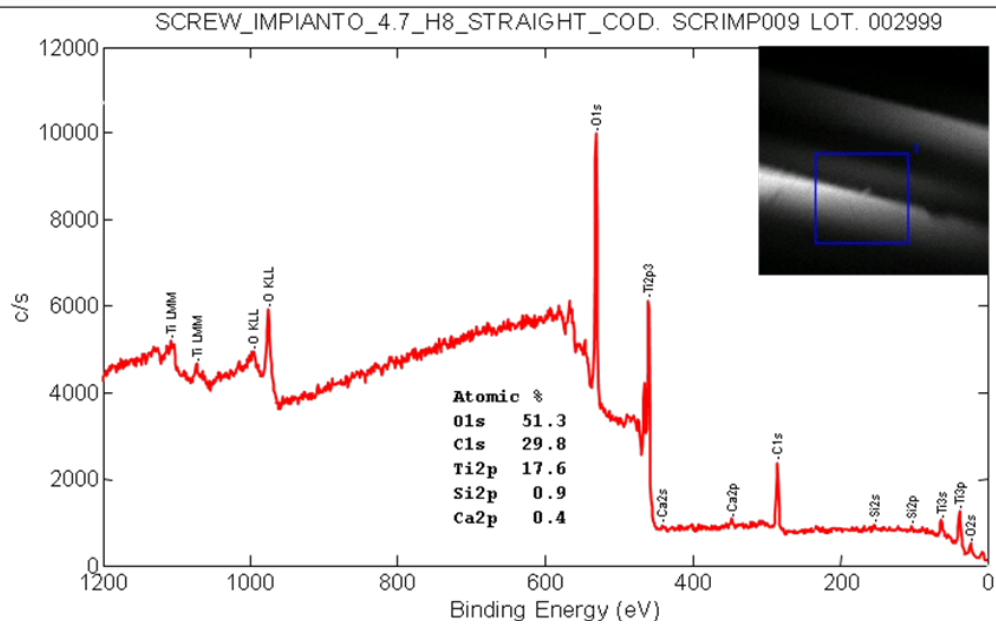
- Presence of a C content between 30% and 40% is often observed, and is considered normal, while greater concentrations are usually considered as a sign of contamination.
- The Ti concentration usually observed is between 14% and 20%. A concentration higher than 10% is usually considered satisfactory.
- The presence of a high amount of O is usually considered favorable for the osseointegration process. O concentrations higher than 40% are reported in literature.
- Besides O, T and C, other elements are often observed, such as Ca, Si, N, Cl, S, F, P, and others. Usually these are present with a overall concentration lower than 3%. The presence of Si, which is the second most common element on Earth after O, is very often observed.

The conditions usually reported in literature to describe the chemical composition of a clean surface involve a O concentration much higher than 40%, a C concentration lower than 30%, and a Ti concentration higher than 10%, with the sum of the other elements lower than 3%.

APPENDIX: XPS spectra

Neck

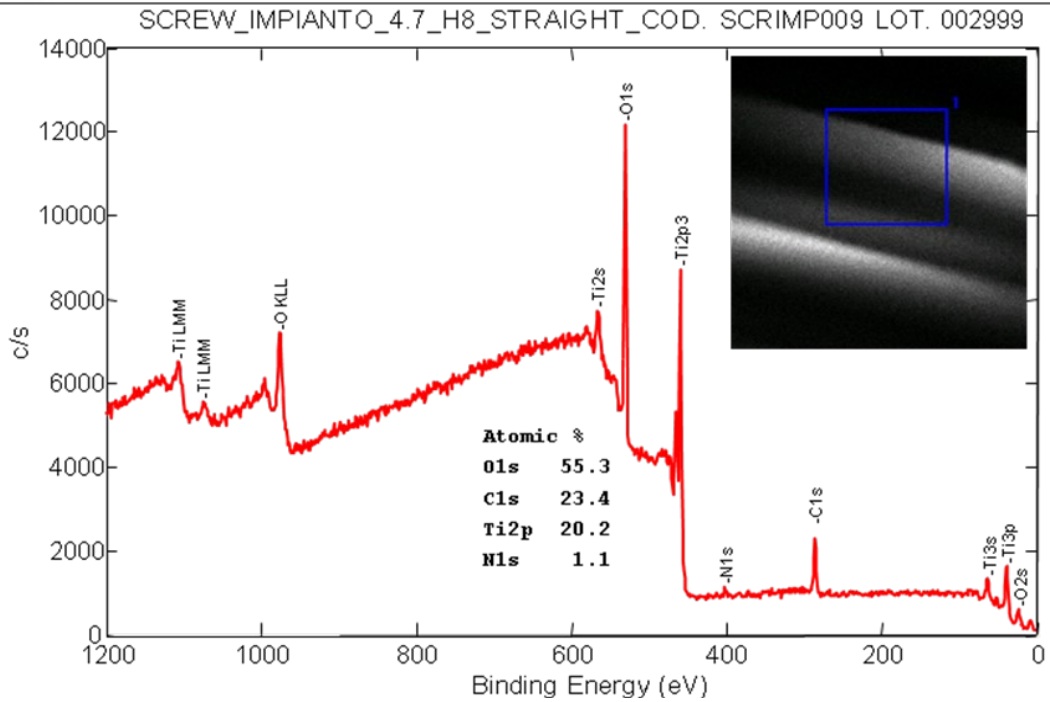
SCREW_IMPIANTO_4.7_H8_STRAIGHT_COD. SCRIMP009 LOT. 0029990003_1.SPE: survey colletto
2015 Mar 27 Al mono 24.5W 100.0µ 45.0° 187.85 eV 9.9943e+003 max
SUR/Area1/1 Polito



Reserved document

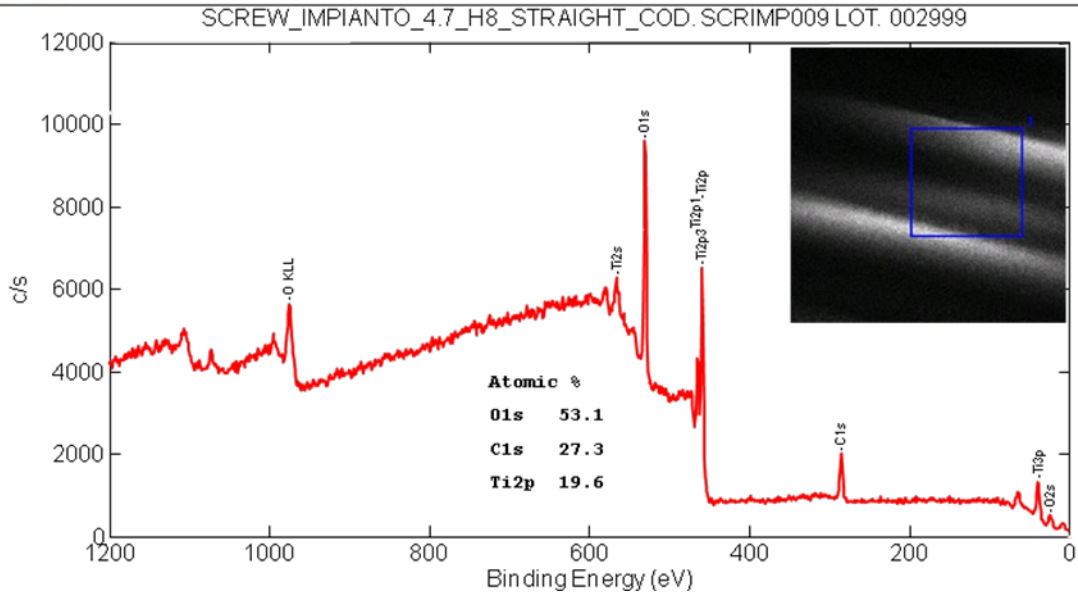
Central region

SCREW_IMPIANTO_4.7_H8_STRAIGHT_COD. SCRIMP009 LOT. 0029990002_1.SPE: survey zon
2015 Mar 27 Al mono 24.5W 100.0µ 45.0° 187.85 eV 1.2182e+004 max
SUR/Area1/1 Polito



Tip

SCREW_IMPIANTO_4.7_H8_STRAIGHT_COD. SCRIMP009 LOT. 0029990001_1.SPE: survey punta
2015 Mar 27 Al mono 24.5 W 100.0 μ 45.0° 187.85 eV 9.5890e+003 max Polito
SUR/Area1/1



Pietro Mandracci